



SALWA GARDEN VILLAGE

**Explore the charm of Salwa Garden Village,**  
**designed to elevate your lifestyle**  
through expansive outdoor spaces and a  
commitment to fostering a vibrant community.



# Table of Contents



<b>1. About Salwa Garden Village</b>	<b>4</b>
Overview	5
Location	6
<hr/>	
<b>2. Amenities</b>	<b>7</b>
Overview	8
Services	14
Supermarket	16
<hr/>	
<b>3. Residences</b>	<b>17</b>
Apartments	18
Villas	21



# About Salwa Garden Village



**Welcome to Salwa Garden Village, where lush greenery meets contemporary living.**

Nestled within a sprawling 1,000,000 square metres, our compound offers a haven for over 1000 residents seeking a harmonious blend of nature and community.





# Overview



## Where Green Tranquility Meets Contemporary Comfort: Your Home in Riyadh

Unveil the pinnacle of serene living at Salwa Garden Village, a tranquil sanctuary nestled just north of Riyadh, a mere 15-minute drive from the airport. Our 1,000,000 square metre estate is meticulously designed to offer residents more than just a residence; it is a haven where the beauty of lush green spaces seamlessly intertwines with modern comforts.

At Salwa Garden Village, our mission is steadfast and clear: to nurture a safe, flourishing community that enriches the lives of our residents.

We strive to preserve the lush expanses that characterize our neighbourhoods, fostering a sense of calm. Our strategic location, adjacent to the airport, strikes a perfect balance between tranquil living and seamless access to the city's vibrant pulse.



**1,000,000 sqm**



**730 Residential Unit**



**14 Outdoor Pools**

## Embrace a Thriving Community

Salwa Garden Village is more than just a place to reside; it's a vibrant community where you can connect with neighbours, forge friendships, and engage in a variety of enriching activities and events. We host regular social gatherings, cultural celebrations, and lively sporting competitions to foster a sense of belonging and camaraderie amongst our residents.

## Amenities for Socializing Coming Soon

Discover communal parks, gathering spaces, restaurants, a coffeshop and clubhouses where neighbours become friends. These areas are thoughtfully designed to encourage interaction, ensuring that the sense of community is at the forefront of our lifestyle.



# Location



Salwa Garden Village is centrally located in North Riyadh, ensuring easy access to key destinations.

We're just

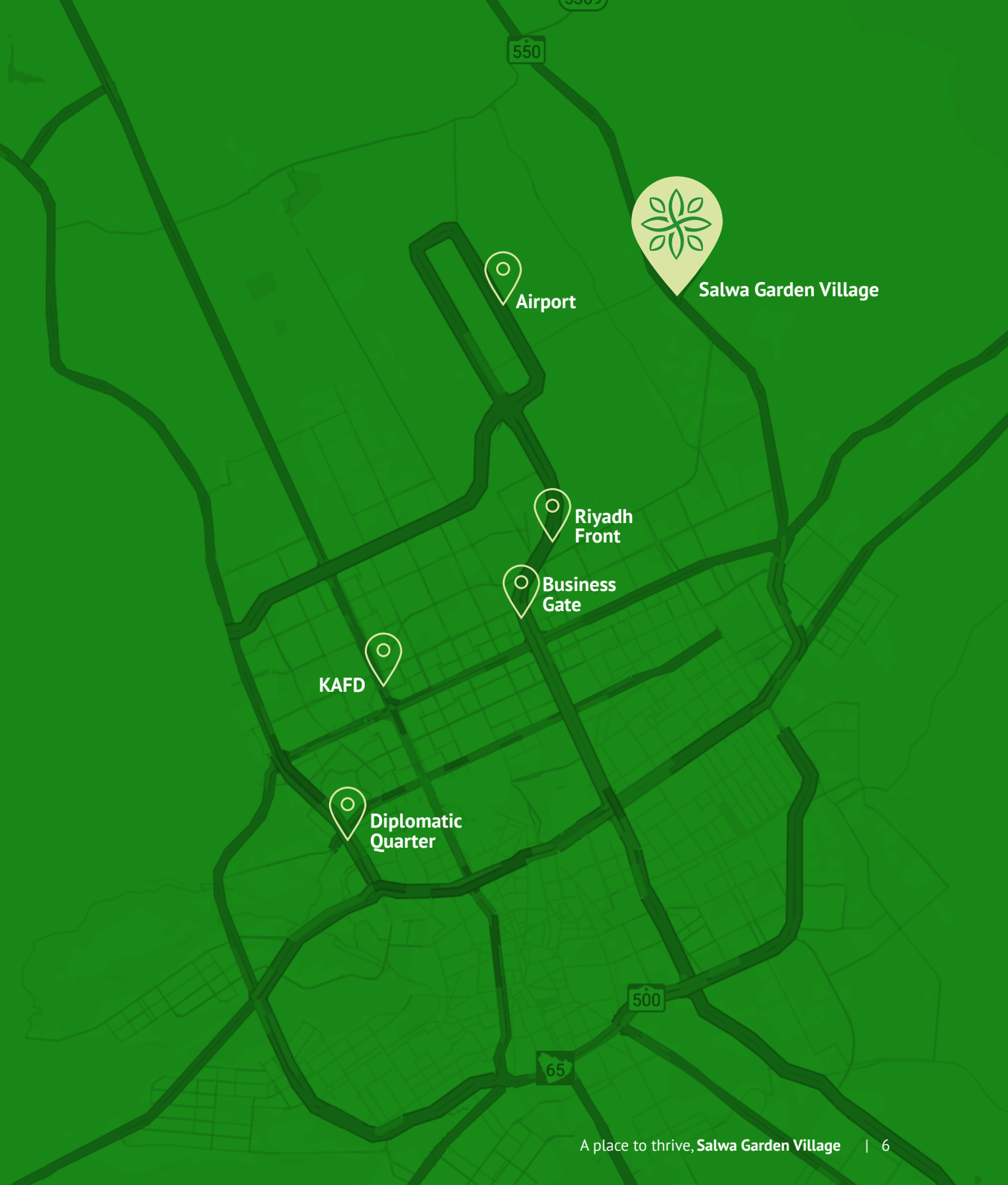
- **15 minutes**  
away from the airport,

- **19 minutes**  
from Riyadh Front

- and a short  
**24 minute**  
drive from the Business Gate.

- For those commuting within the city, we're approximately  
**40 minutes**  
away from KAFD, Downtown, and the Diplomatic Quarter.

Our strategic positioning makes Salwa Garden Village a highly accessible and well-connected residential choice in Riyadh. Contact us for more information or to schedule a visit and discover the convenience of our prime location.





# Amenities



**Salwa Garden Village presents a range of facilities designed to enhance your everyday living.**

From a fully equipped fitness centre and wellness spaces to inviting play areas and clubhouses, our community is designed to cater to diverse needs. Enjoy the convenience of on-site services like day care and personal care, ensuring that every aspect of your lifestyle is effortlessly accommodated within the vibrant atmosphere of Salwa Garden Village.



# Overview



## Immerse Yourself in a World of Amenities

Beyond our spacious and well-appointed apartments and villas, Salwa Garden Village presents amenities and facilities designed to enhance your lifestyle.



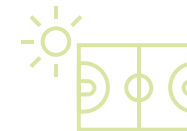
**School**



**Outdoor  
Swimming Pools**



**Bowling Alley**



**Floodlit Tennis  
Courts**



**Rugby Field**



**Wellness Centre**



**Club Houses**



**Multipurpose  
Indoor Court**



**Fitness and  
Sports**



**Personal Care**



**Playgrounds**



**2 Padel Courts and  
3 Squash Courts**







## School: Ellesmere College (Opening August 2025)

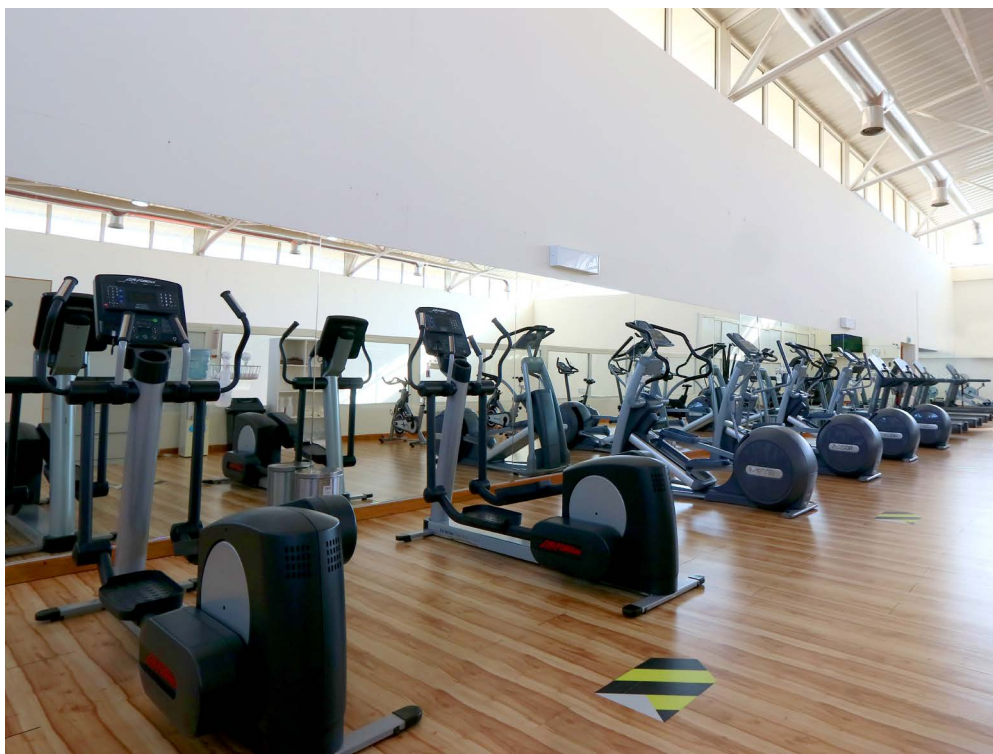
Education at Salwa Garden Village extends beyond the home. Nestled within the tranquil safety of the compound, our school fosters a nurturing and academically stimulating environment for elementary students. By seamlessly integrating a rigorous curriculum, dedicated faculty, and a diverse array of extracurricular activities, we strive to cultivate well-rounded individuals equipped to excel in future academic pursuits and navigate the complexities of global citizenship.



## Outdoor Swimming Pools

Dive into a world of aquatic bliss at Salwa Garden Village, where our compound boasts an impressive 14 outdoor pools. Whether you're seeking a refreshing swim or a sun-soaked retreat on warm days, our pools offer the perfect place. Surround yourself with the lush greenery as you bask in the serenity of our poolside retreats, creating a tranquil oasis within the heart of Salwa Garden Village.





## Fitness and Sports

Elevate your fitness experience at our fully equipped gym and spinning studio, where separate areas for cardio and weights, equipped with cutting-edge equipment and invigorating classes await to propel you towards your health and wellness goals. Immerse yourself in training in our 25m indoor pool or participate in friendly matches on our full grass 11-a-side football/rugby pitch to challenging games on our tennis, basketball, 5-a-side football or squash courts. Our array of facilities caters for every sporting interest. Embrace an active lifestyle, all within the comfort and convenience of our residential compound.







 **Floodlit Tennis Courts**



 **Multipurpose Indoor Court**



 **Squash Courts**



 **Rugby Field**





## Sauna

Unwind in absolute tranquility at our wellness facilities within the compound. Revitalize your senses in the sauna, experience rejuvenation with a refreshing plunge pool, and immerse yourself in a state of serene well-being.

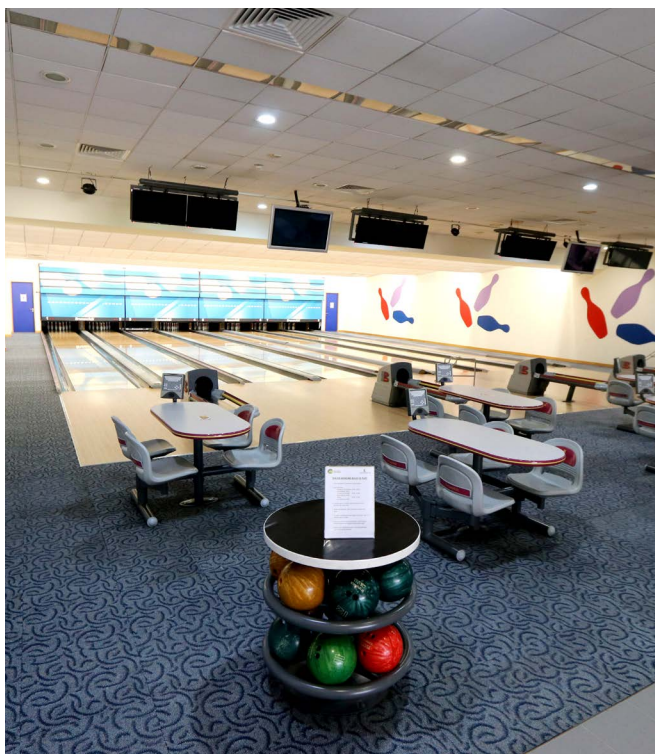


## Personal Care *(opening to be confirmed)*

Indulge in luxury at our chic salon, where adept professionals attend to your hair and beauty requirements. Our barber shop, tailored for gentlemen, provides precision cuts and grooming services to ensure you look and feel your absolute best.







## Bowling Alley

Ignite lively and amiable competition at our cutting-edge bowling alley, ideal for creating unforgettable moments with friends and family.



## Club Houses

Relax and socialise at our welcoming clubhouses, where community events and gatherings foster enduring memories.



## Playgrounds

Watch your little ones revel in joy and boundless energy at one of our engaging children's playgrounds.



# Services Coming Soon



## Indulge in a seamless living experience at Salwa Garden Village.

Witness the beauty of our meticulously landscaped surroundings, relish spacious living spaces, enjoy hassle-free laundry and garden services and engage in community-building events.



**Landscaping Service**



**Events**



**Laundry Service**



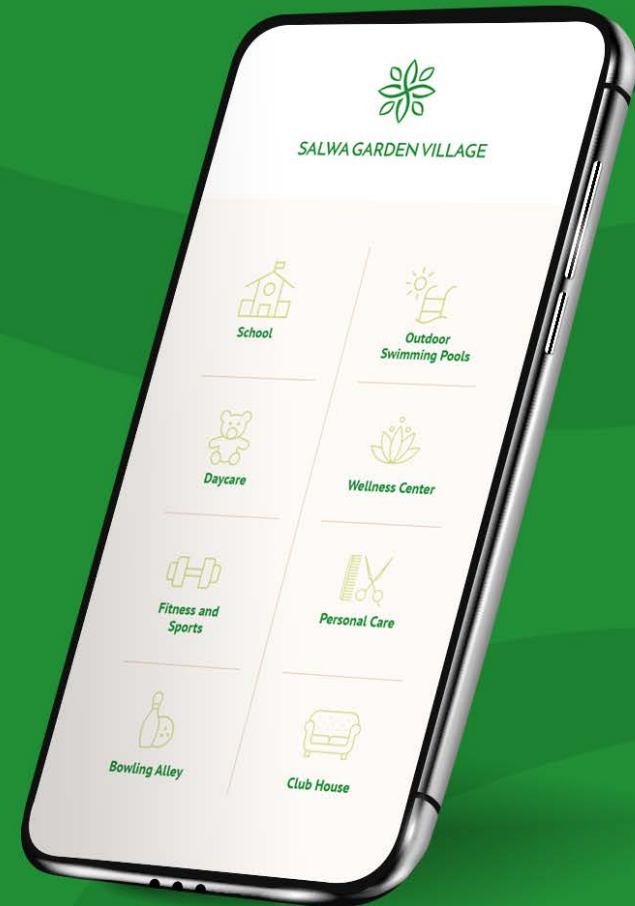
**Cleaning Service**



**Auditorium**

Additionally, elevate your convenience with a dedicated mobile application tailored exclusively for our residents, providing instant access to essential information, and enhancing your overall residential experience.

**At Salwa Garden Village,  
excellence in service is our commitment to you.**



## Security Measures

**At Salwa Garden Village, your safety is our top priority.**

Our security protocols are implemented with meticulous care, ensuring a secure environment for all residents.

With 24/7 surveillance, controlled access points, and a proactive security team, we take every measure to safeguard your peace of mind. Our commitment to a safe and secure community extends beyond physical measures; it is a shared responsibility that unites us in creating a residence where residents can truly thrive.





# Supermarket



## Experience the ultimate convenience of having a Tamimi Supermarket right within the heart of Salwa Garden Village.

Our residents enjoy the privilege of quick and easy access to a well-stocked Tamimi branch, offering a diverse range of high-quality products. Whether it's daily essentials or indulgent treats, the presence of Tamimi Supermarket adds an extra layer of convenience, making your shopping experience effortless. Their service orientated staff are always willing to take special orders. Say goodbye to long commutes for groceries – at Salwa Garden Village, your necessities are just steps away.



## About Tamimi Market

أسواق التميمي  
tamimi markets

Tamimi Markets is one of the fastest-growing supermarket chains in Saudi Arabia, and shoppers named Tamimi Markets a Top 100 Saudi Brand 5 times in the past 6 years, with a focus on customer service, quality, freshness, variety and everyday low prices.

Tamimi Markets is the supermarket of choice for many Saudis and expatriates. Our spacious, well-stocked and competitively priced stores carry the finest local and regional brands and a wide selection of quality produce, meats, seafood, cheeses and household products.





# Residences



## Explore a Diverse Range of Living Options

Salwa Garden Village caters to a variety of needs and lifestyles with its five distinctive unit types, ranging from cozy 1-bedroom apartments to the grandeur of super executive villas with 5 bedrooms. Each residence is thoughtfully crafted to harmonize with the lush greenery, offering a living experience that is both comfortable and connected to outdoor gardens.





# Apartments



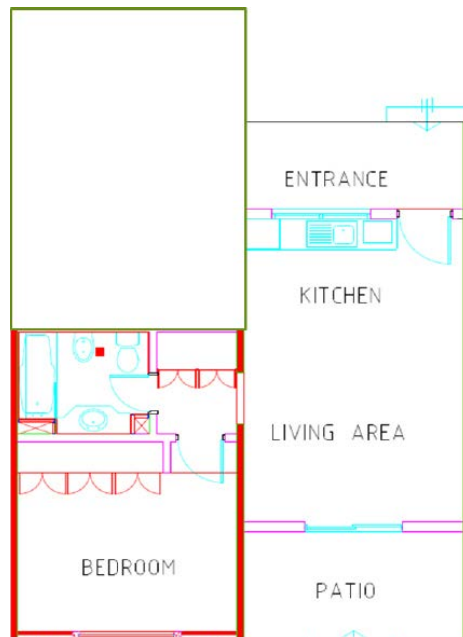
## Discover the ease of contemporary living in the apartments at Salwa Garden Village.

Designed for comfort and convenience, our apartments offer a practical yet stylish lifestyle. Enjoy well-planned spaces that cater to your daily needs, creating a living experience that is modern, spacious and comfortable.

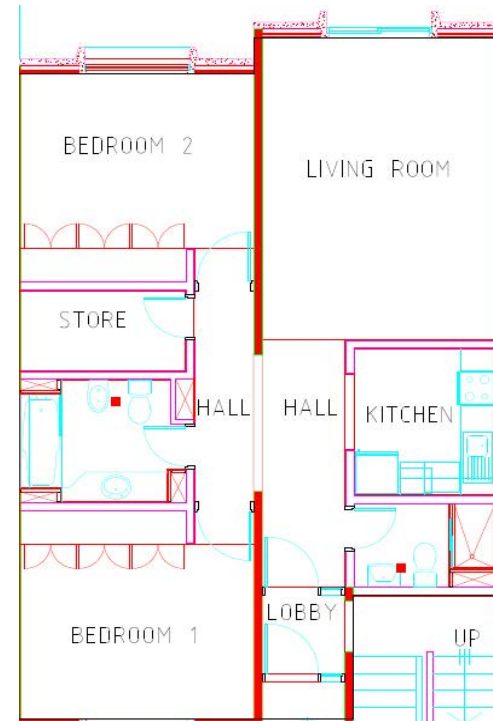




## 1 Bedroom Apartment



## 2 Bedroom Apartment





# Villas



**Explore the charm of modern living in our villas  
at Salwa Garden Village.**

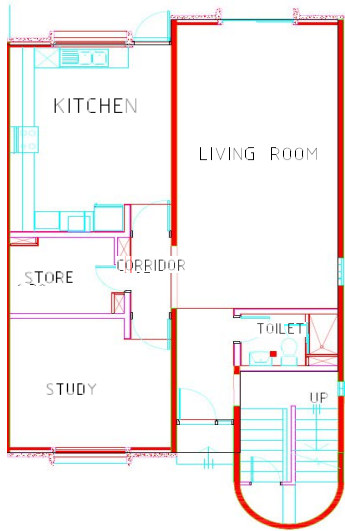
These thoughtfully designed homes offer contemporary comfort with spacious interiors and private outdoor spaces. Experience a lifestyle where simplicity meets sophistication in a community tailored for discerning residents.



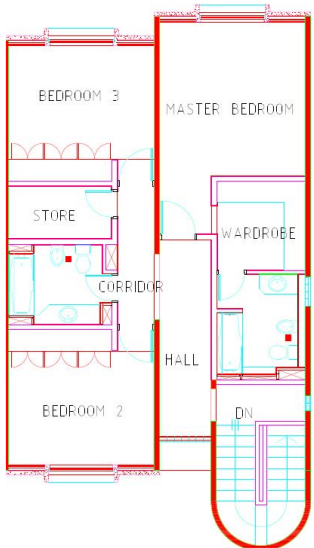


### 3 Bedroom Villa

#### Ground Floor

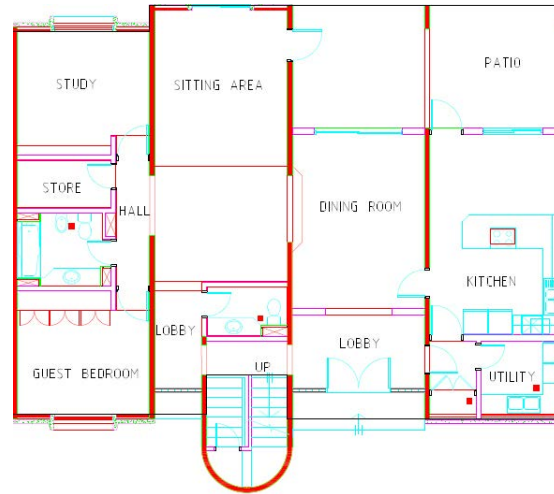


#### First Floor

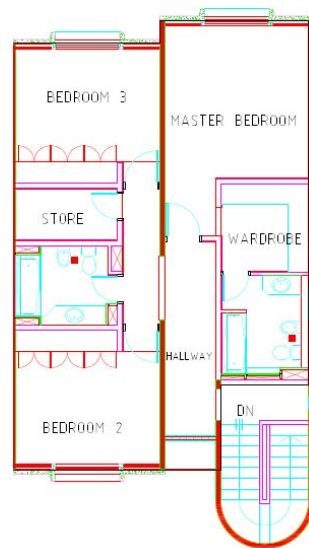


### 4 Bedroom Executive Villa

#### Ground Floor

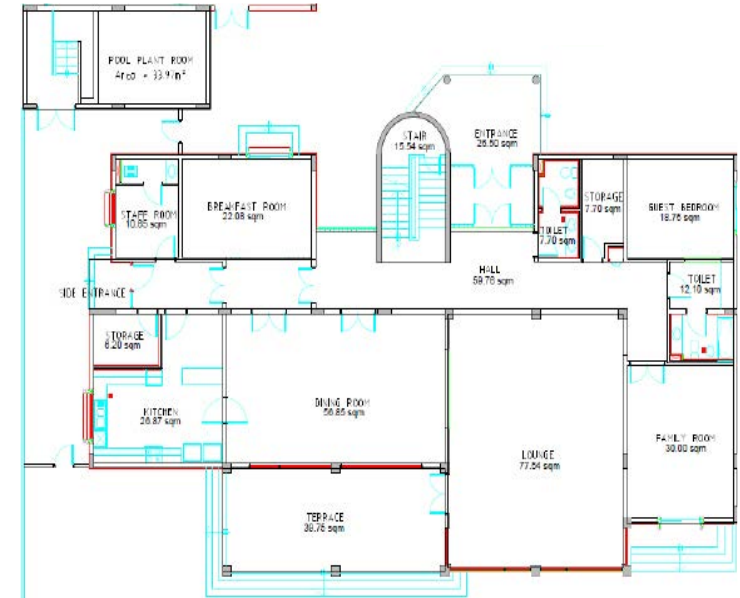


#### First Floor

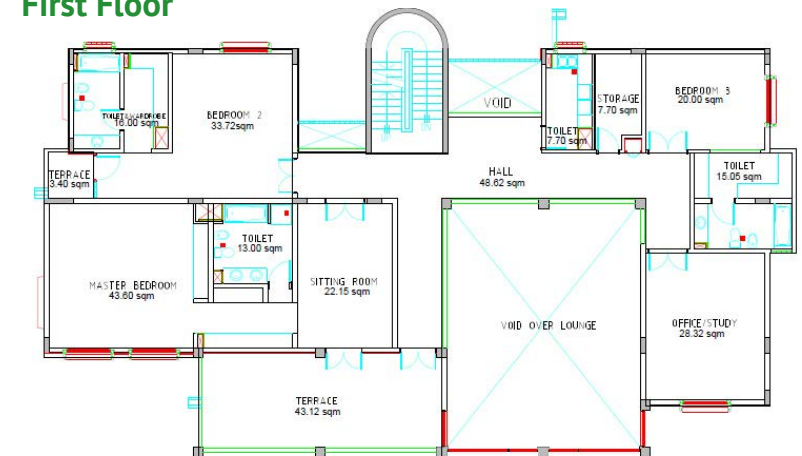


### 5 Bedroom Super Executive Villa - with Private pool

#### Ground Floor



#### First Floor





# SALWA GARDEN VILLAGE

Contact us:

[info@salwagardenvillage.com](mailto:info@salwagardenvillage.com)